

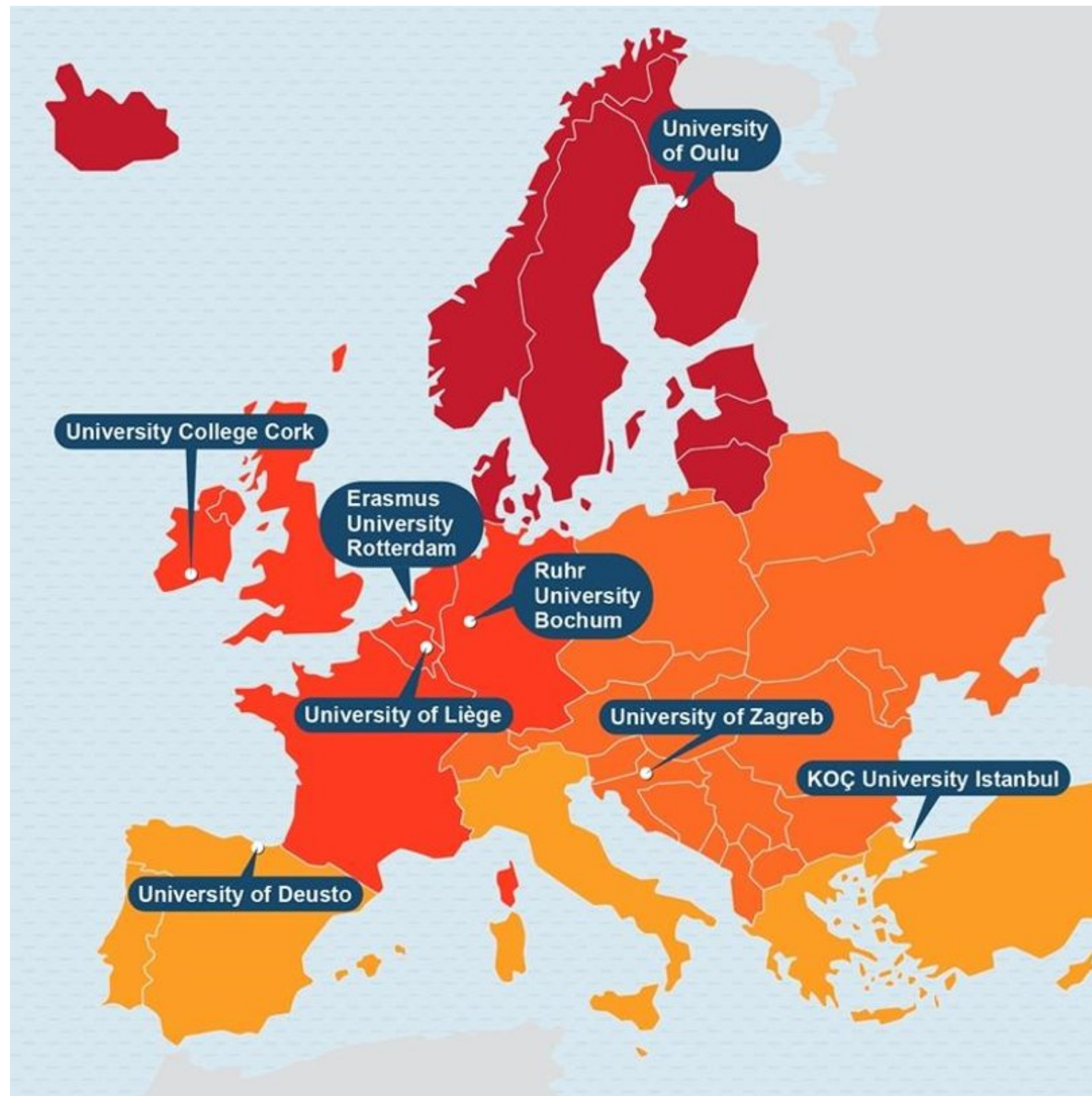
Student Guide : Welcome to Liège!

September, 2021

unic@uliege.be



European University of Post-Industrial Cities (UNIC)

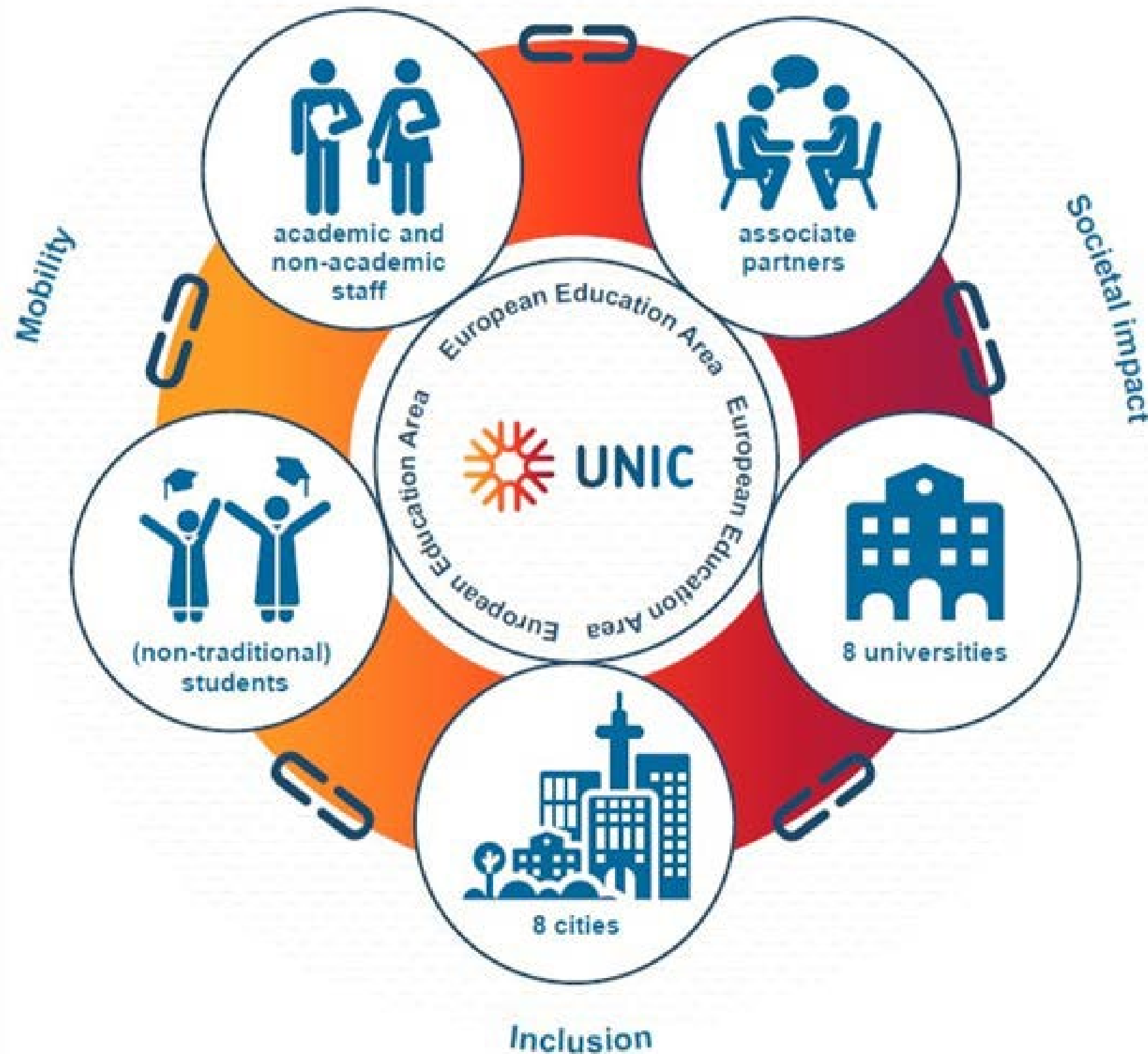


An alliance of 8 post-industrial universities covers:

- 224 778 students
- over 8000 PhD students
- 30 669 staff
- 27 associates (17 public organizations, 10 NGOs)



UNIC en bref



3 main actions:

- ❖ An interuniversity campus (virtual campus)
- ❖ The Superdiversity Academy
- ❖ UNIC CityLabs

What is UNIC CityLabs?



Brings diverse people together

students, researchers, city stakeholders, organizations and citizens



Creative solutions implemented locally

drives societal change



Events of many shapes and sizes

workshops, hackathons, panel discussions, interviews, courses...



Harnesses “brain power” across Europe

insights, ideas and best practices

Collaborative problem solving

diversity widens perspectives and boosts creativity

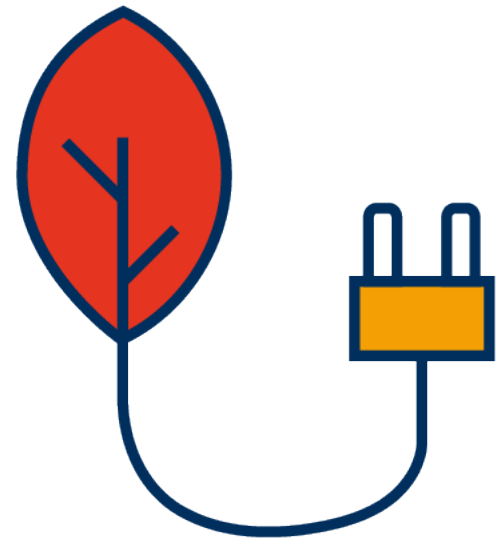


UNIC CityLabs' themes

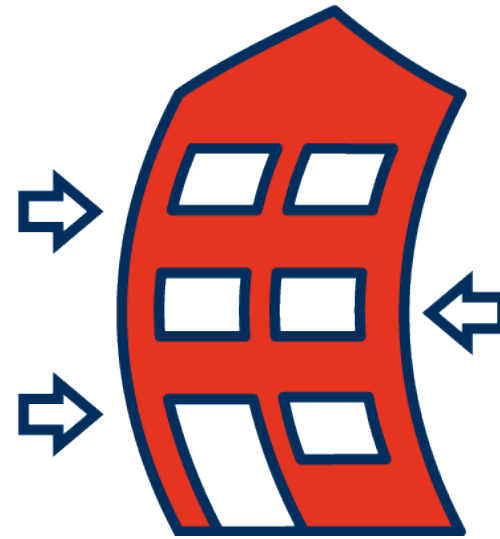
**Diversity and
inclusion**



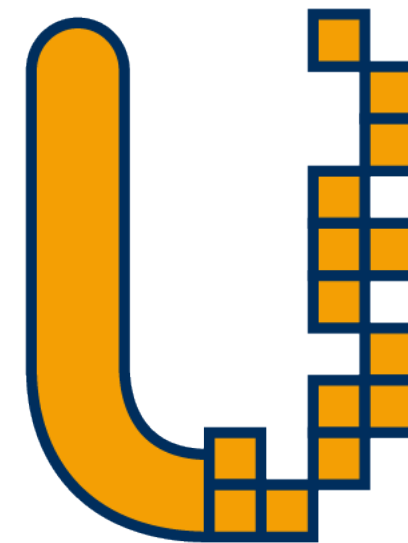
**Green cities,
sustainability**



**Urban resilience &
transformation**



**Digital
transition**



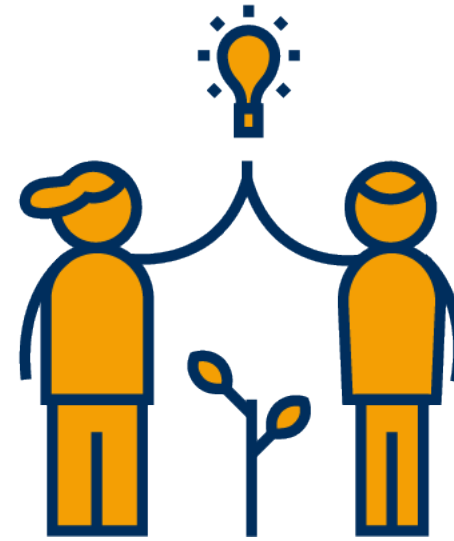
**Aging
population**



Problem-solving in UNIC CityLabs



1) Identifying challenges
locally



2) co-creating solutions
UNIC-wide



3) implementing creations
locally



The Festival

- **What?**
 - A 3-day festival that brings together citizens and actors from the civil society, academia, politics, and business
- **When?**
 - 14 to 16 October 2021
- **Where?**
 - Hybrid Festival: join us both physically and virtually!
- **How?**

This will be the first occasion to make all universities of the UNIC alliance' staff members and students meet!

14 October 2021

Official Opening

Opening speeches

Concert

Exhibition

Reception

15 October 2021

CityLabs

Roud tables – Intercultural meetings

Workshops

Walks

Evening at the Hangar

16 October 2021

Transition of Post-Industrial Cities

Workshops and Conferences

Museums and Exhibitions

Cinema and Theater

Closing Drink



Student activities



11-14 October

- Team building activities
- Discovery of the city of Liège, the University and its campuses
- Thematic group workshops/preparation of the CityLabs Festival

14-16 October

- Participation to the Festival's activities



Discover the programmes on our bilingual website: www.unic-citylabs.uliege.be

Student activities



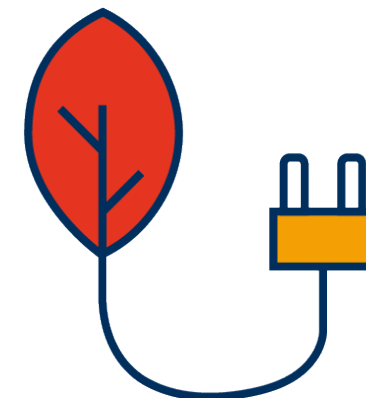
Socio cultural activities

***Organisation of
intercultural activities***
International Relations

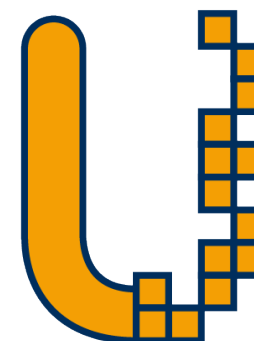
Theater Workshop
Royal University Theater of Liège

***Participation to the
project P@trimonia***
Faculty of Applied Sciences

***Management of a photo
exhibition***
International Relations



**Environmental
activities**
Green Office



**Communication
activities**
ULiège & UNIC Communication
Departments



**UNIC Consortium
Meetings**
UNIC Team

Arrival

To visualise the different airports:

<https://www.google.com/maps/d/edit?mid=1V59t-Gt9pXvyEn3ZS0DSmiMIUA9hjRTj&usp=sharing>

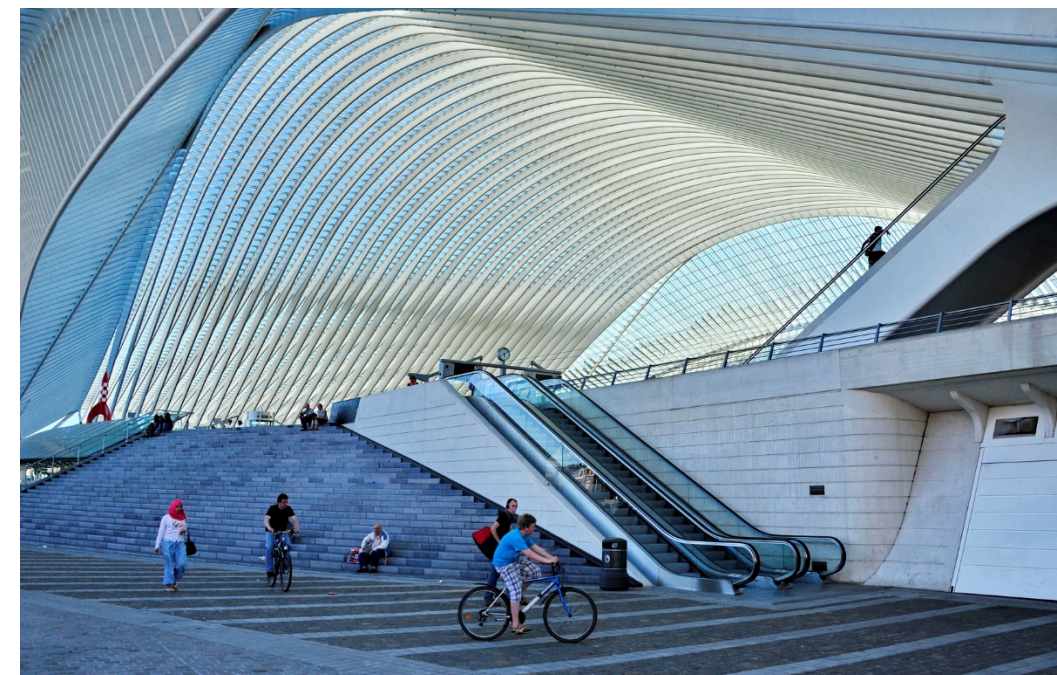
By train – Arrival at Liège-Guillemins Station (SNCB)

- If you are coming **by plane**:
 - **Brussels Airport Zaventem**: take a train directly from the airport to Leuven, then take another train to the Liège-Guillemins Railway Station (SNCB).
 - **Brussels South Charleroi**: the city of Charleroi is 7km away from the airport, a shuttle joins both places. From the city, you can take buses, coaches or trains to Liège-Guillemins.
 - **Liège Airport (Liège-Bierset)**: you can take a shuttle or a bus (lines 53 and 57) to reach the city centre of Liège.
- If you are coming from any other airport around Belgium, your final destination is still the Liège-Guillemins Railway Station!



Buses from the Station

- At bus stop A in front of the station: lines **1, 4, 30, 27, 48** to reach the city centre.
- **NB**: you will not be able to buy your bus ticket on board. You will find inside and outside the station red TEC terminals.



Arrival

Persons with disabilities can benefit from assistance during their journey on the Belgian rail. It is recommended to contact the SNCB Contact Centre at least 24 hours before the journey, by phone or online.

→ +32 2.528.28.28

→ <https://www.belgiantrain.be/en/travel-info/prepare-for-your-journey/assistance-reduced-mobility>



My journey

From:
Departure point or address

To:
Destination or address

Date:
16/09/2021

Time:
09:33

☒ Departure ☐ Arrival

> Personalize my journey

Plan my journey >

> Travel Information

> International travels

buy a ticket customer service

My SNCB

en

Menu

Passengers with reduced mobility
Do you find travelling alone difficult? Opt for our tailor-made service!

Book your assistance in Belgium

Book your assistance abroad



[Home](#) > Services to passengers with reduced mobility

Coronavirus in Belgium
In the context of the COVID-19 health crisis and in order to apply the hygiene and social distancing recommendations issued by the Belgian authorities, SNCB had to adapt its measures for assistance to people with reduced mobility for journeys in Belgium. Specific measures also apply for travelling abroad.

Accommodation



Simenon Hostel

Rue Georges Simenon 2

4020 Liège

Bus line **4** from the station



<https://www.lesaubergesdejeunesse.be/liege>



Get to know Liège



“The Ardent City” (*La cité ardente*) is famous for its historical streets and monuments, its folklore, but also for its welcoming and friendly inhabitants.

Things to do in the City:

- Visit the Palace of the Prince-Bishops (*Palais des Princes évêques*) and its almost 500-year-old architecture
- Have a walk along the river *Meuse*
- Discover the gardens of the *Cotaeux de la Citadelle*
- Taste the typical and traditional *boulets à la Liégeoise*





The majority of the activities will take place at:

Place du Vingt Août 7
4000 Liège

https://www.uliege.be/cms/c_8699436/fr/uliege



University of Liège, created in 1817 on the remains of the medieval College of of the Brethren of the Common Life (1496).

1 University – ULiège

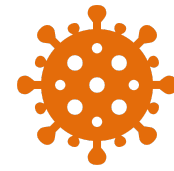
3 Cities – Liège, Arlon,
Gembloux

4 Campuses – Liège centre-ville,
Liège Sart Tilman, Arlon,
Gembloux



Salle Académique, finished in 1824.

Covid-19



- **Physical Festival in Liège!**

- For current measures in Belgium: <https://www.info-coronavirus.be/en/faq/>
- If you need to take a **PCR test**:
 - 47, 18€ (for travel purposes)
 - You can find the testing centres of Liège on this website:
<https://www.liege.be/fr/actualites/depistage-covid-19>
 - You can also book an appointment on: www.masante.belgique.be & www.info-coronavirus.be

- **Attention:** following the current measures, the Covid Safe Ticket might be necessary for some of the activities:

[https://ec.europa.eu/info/live-work-travel-eu/coronavirus-
response/safe-covid-19-vaccines-europeans/eu-digital-covid-](https://ec.europa.eu/info/live-work-travel-eu/coronavirus-response/safe-covid-19-vaccines-europeans/eu-digital-covid-)

[certificate_en](#)



Where to find all these information ?

<https://www.unic-citylabs.uliege.be>



Information for delegations

Are you part of a delegation coming to Liège for the Festival? Please find all the practical information below.

All delegations' programmes are going to be published on the 20th of September.

For any question, please contact the UNIC office of your University.

Contacts



UNIC Coordination Team at the University of Liège

Charlotte VENEMA
Christophe BRUCHANSKY
Marina LENZEN

International Relations

unic@uliege.be

+ 32 (0) 4 366 90 54 or 90 55